



NetApp™
Go further, faster

Success Story

NetApp Enables Siemens PLM to Reduce Costs and Accelerate Time to Market



SIEMENS

KEY HIGHLIGHTS

Industry

High tech/software development

The challenge

Manage high data growth and accelerate product time to market. Ensure engineering productivity and collaboration across highly distributed engineering and development teams.

The solution

Standardize on NetApp® storage to support globally distributed development teams in all phases of development process in heterogeneous networked environment.

Benefits

- Dramatically reduced costs
- Enabled accelerated time to market
- Provided for flexible and scalable growth
- Reduced backup times from two to three weeks to just minutes

CUSTOMER PROFILE

UGS, now known as Siemens PLM Software, is a leading global provider of product life-cycle management (PLM) software and services. Headquartered in Plano, Texas, the company supports 5.9 million licensed seats and 56,000 customers worldwide.

For nearly four decades, Siemens PLM's solutions have helped customers speed time to market, improve quality, and increase revenue. The Siemens PLM software portfolio covers the entire array of collaborative product data management (cPDM), computer-aided design/computer-aided manufacturing/computer-aided engineering (CAD/CAM/CAE), and digital manufacturing simulation ("digital factory"). Companies worldwide use Siemens PLM software to create and manage the huge volumes of data associated with many of the world's most sophisticated and innovative products.

"As a leading provider of PLM software, we are committed to delivering continuous software updates to accommodate the highly competitive and demanding marketplace we serve. If we can design and test a new feature in days versus weeks, that can save us tremendous amounts of resources and help accelerate our time to market," said John Crowley, director of Technical Infrastructure at Siemens PLM.

THE CHALLENGE

Accelerate time to market

Siemens PLM customers include some of the biggest brands in innovation, including BMW, Canon, Dyson, GM, Honda Racing, and Procter & Gamble. These companies rely on Siemens PLM software products and services to help them design, build, and innovate the next generation of their products, including automobiles, aircraft, computers, and electronics.

Siemens PLM must meet the growing and changing demands of these companies by adding new features and functionality every year, which requires a very aggressive set of software release cycles. The engineering and development teams are constantly building, testing, and sharing new source code every day and are working at a very accelerated pace. This rapidly changing, data-intensive development environment requires a flexible yet highly available storage environment.

Balancing and managing data growth while accelerating time to market is no easy task. Compounding that challenge is the fact that the Siemens PLM development and engineering teams are distributed across different continents, including North America, Asia, and Europe, and work on different operations systems, including UNIX®, Linux®, and Windows®. The engineering and software

“Standardizing on NetApp storage across our distributed engineering and development team has enabled us to streamline backups and improve our data protection process. If a file gets accidentally deleted, Snapshot copies provide an exceptional way to recover without losing a step, helping us save time and resources. And, with a low total cost of ownership, the NetApp solution has allowed us to control administrative costs.”

John Crowley

Director of Technical Infrastructure, Siemens PLM

development data environment needs to maintain an extraordinarily high level of performance, reliability, and availability. If the storage and data are not available, engineers and developers are unable to do their jobs.

THE SOLUTION

Standardize on NetApp storage to manage and protect engineering and development data

Siemens PLM standardized on NetApp storage and services to manage and protect one of its most valued assets: its software development data and files. While the engineers and development teams have been using NetApp for over a decade, there was a time when Siemens PLM relied on a heterogeneous storage environment in which all engineering teams independently selected their own storage subsystems. To simplify the environment, the Siemens PLM IT team elected to standardize on NetApp to provide the performance and scalability that could support their heterogeneous operating environment.

Siemens PLM manages most of its software development and engineering applications on NetApp storage and relies on it for fast, reliable data access. Siemens PLM has also been able to facilitate information sharing, streamline backup, and easily manage data across remote development sites. The NetApp unified architecture and the

breadth of its product line enable Siemens PLM to address its rapidly changing and growing storage requirements within a single, easily managed platform.

NetApp storage supports a global team of over a thousand engineers and developers and over 100TB of raw data. All of these have multiple development environments, including Microsoft® Windows, Linux, IBM AIX, Hewlett Packard HP-UX, and Sun™ Solaris™ platforms. Siemens PLM currently relies on a wide range of NetApp hardware and software, including:

- NetApp FAS900s
- NetApp FAS250s for smaller engineering and development teams and projects
- NetApp FAS3020s
- NetApp NearStore® R200s
- NetApp NFS and CIFS protocols
- NetApp Snapshot™ technology
- NetApp FlexVol® software

BUSINESS BENEFITS

Tremendous storage agility leads to faster time to market

NetApp enabled IT to accommodate the rigorous and changing demands of the engineers and development teams. As Siemens PLM's development team continued to grow, the manual processes to request and obtain data expansion became time consuming and began to hamper productivity.

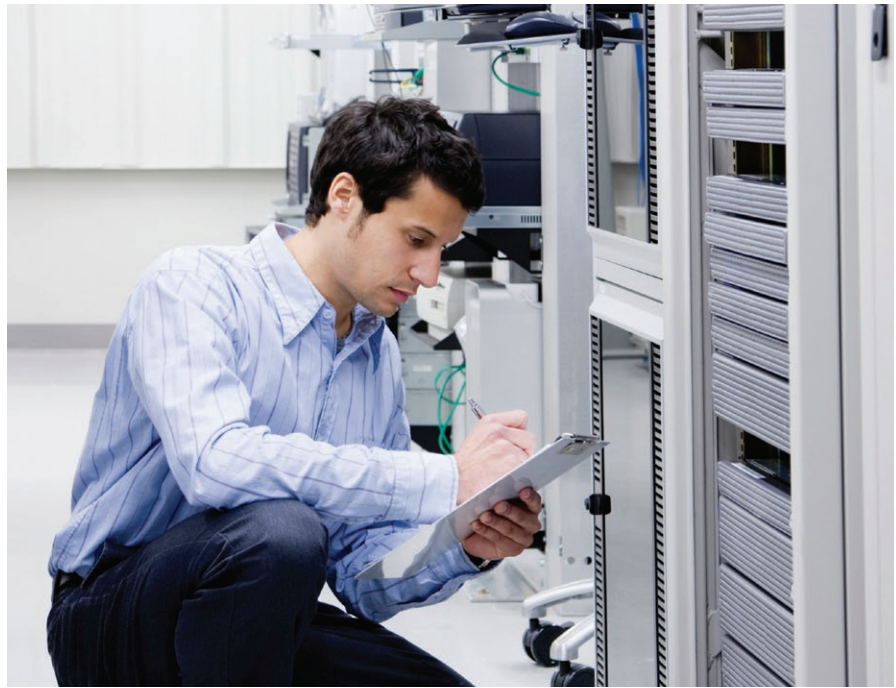
NetApp flexible disks and FlexVol volumes now enable IT to expand storage on demand and at various sites. The increased flexibility not only makes engineering and development teams happy but also increases their productivity, which in turn helps Siemens PLM accelerate time to market.

Seamless data sharing within the engineering team leads to improved productivity

With NetApp storage, Siemens PLM can easily collaborate, protect, and manage data across geographically dispersed engineering and development teams. The ability of NetApp to natively support NFS and CIFS protocols from the same system allows unprecedented collaboration and speeds up mixed-environment product development in which NetApp products are used. Unlike many other solutions, NetApp delivers consistent high performance across all platforms.

High availability and performance lead to reduced costs

Siemens PLM recognized the need for a more cost-effective way to continually protect and scale its data to accommodate the rigorous performance requirements of the engineering and development teams. The company's traditional tape backup system was not designed for this new environment, and too much administrative time was being spent retrieving data.



Now, with NetApp in place, Siemens PLM can easily and painlessly create daily Snapshot copies of the engineering and developer work environments. The flexibility and efficiency that NetApp provides allowed Siemens PLM to dramatically reduce the time it took to back up and recover files. What once took two to three weeks can now be done in minutes with Snapshot copies and is expected to bring Siemens PLM significant business benefits from reduced maintenance, operational, and administration costs.

“Standardizing on NetApp storage across our distributed engineering and development team has enabled us to streamline backups and improve our data protection process. If a file gets accidentally deleted, Snapshot copies provide an exceptional way to recover without losing a step, helping us save time and resources. And, with a low total cost of ownership, the NetApp solution has allowed us to control administrative costs,” stated Crowley.

SOLUTION COMPONENTS

NetApp products

NetApp FAS900s

NetApp FAS250s

NetApp NearStore R200s

NetApp Snapshot

NetApp FlexVol

Protocols

NFS and CIFS protocols

Environment

Applications: Perforce Software

Operating Systems: Microsoft Windows, Linux, IBM AIX, Hewlett Packard HP-UX, and Sun Solaris platforms



www.netapp.com

NetApp creates innovative storage and data management solutions that accelerate business breakthroughs and deliver outstanding cost efficiency. Discover our passion for helping companies around the world go further, faster at www.netapp.com.

© 2009 NetApp. All rights reserved. Specifications are subject to change without notice. NetApp, the NetApp logo, Go further, faster, FlexVol, NearStore, and Snapshot are trademarks or registered trademarks of NetApp, Inc. in the United States and/or other countries. UNIX is a registered trademark of The Open Group, Linux is a registered trademark of Linus Torvalds, Windows and Microsoft are registered trademarks of Microsoft Corporation, Sun and Solaris are trademarks of Sun Microsystems, Inc. All other brands or products are trademarks or registered trademarks of their respective holders and should be treated as such. CSS-6014-0209